

# Camp Kayla

Sensory Camp

Join us for sensory fun. We will be building sensory boxes, slime, and using different textures to explore our senses.



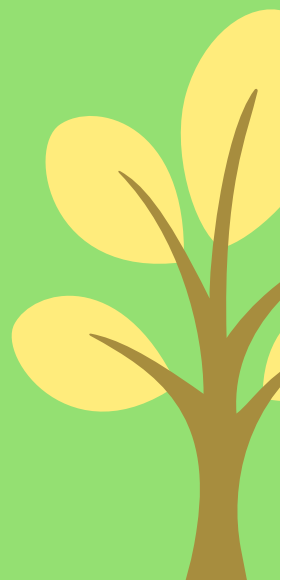
\$25 Registration Fee  
\$120 Camp Fee

Contact:

Kayla Poulos  
843.817.4714

Please make checks payable  
to Kayla Poulos  
For ages 2-10  
Please send a snack and  
drink

June 6  
to 8  
2022  
9a-12p



Country Day School

Registration Form

Summer Camps

This form serves as registration for all summer camp programs held at Country Day School.

(Please initial each line)

\_\_\_\_\_ My child has permission to participate fully in this summer camp and the activities that go along with it.

\_\_\_\_\_ I, hereby release, hold harmless and indemnify Country Day School, LLC, DBA Country Day School and the summer camp instructors from any and all liabilities arising from, relating to, or in conjunction with the services provided upon the premises. I understand that these summer camps take place on the school grounds of Country Day School but are not sponsored by the school or affiliated with the school in any way.

\_\_\_\_\_ A non-refundable \$25.00 registration fee is required for all of the camps. This fee must accompany the registration form to hold your child's spot, made payable to the camp instructor.

\* Full payment must be received a minimum of one week prior to the camp start date.

\*A 72 hour cancellation notice is required or all monies paid will be lost.

\*A separate registration form must be filled out for each camp. Camp instructors are paid separately. You are not able to combine multiple camp forms and payments together. No checks are payable to CDS.

(Please Print)

Student's Name: \_\_\_\_\_ Age: \_\_\_\_\_

Address: \_\_\_\_\_ City: \_\_\_\_\_

Parents' Names: (Mom) \_\_\_\_\_ (Dad) \_\_\_\_\_

Phone Numbers: (Mom) \_\_\_\_\_ (Dad) \_\_\_\_\_

Email: \_\_\_\_\_

Allergies: \_\_\_\_\_ Epi-pen:      yes              no

Custody Issues:      Yes              No

Please list who has permission to pick up your child or can be contacted in an emergency:

Name: \_\_\_\_\_ Phone #: \_\_\_\_\_

Name: \_\_\_\_\_ Phone #: \_\_\_\_\_

## Registration Form (Continued)

Child's Name: \_\_\_\_\_

**Please circle the summer program and week you are registering your child.**

Please remember that camp payments go to the camp instructor and **not** to CDS.

**Swing into Summer Camp**

Shannon Noble, Ann Jones & Ashleigh Barkley

(Monday, May 23rd - Wednesday, May 25th)

**Soaring into Summer Kids Camp**

Pam Corte & Gina Holcombe Nelson

(Monday, May 23rd - Wednesday, May 25th)

**Let's Play Treasure Hunt**

Gina Holcombe Nelson

(Wednesday, June 1st - Friday, June 3rd)

**Camp Learn -a - Lot**

Erin Peden

(Monday, June 6th - Thursday, June 9th)

\*This camp is offered two different dates

(Monday, July 18th - Thursday, July 21st)

**Field Day Fun Camp**

Pam Corte

(Monday, June 6th - Wednesday, June 8th)

**Camp Kayla Sensory Camp**

Kayla Poulos

(Monday, June 6th - Wednesday, June 8th)

**Dinosaurs & Unicorns Camp**

Becky Harrell

(Monday, June 13th - Wednesday, June 15th)

**Fun in the Sun Camp**

Gina Holcombe Nelson

(Monday, June 13th - Friday, June 15th)

**His Kids Summer Camp**

Gina Holcombe Nelson

(Monday, June 20th - Wednesday, June 22nd)

**Red White & Blue Camp**

Pam Corte & Becky Harrell

(Monday, June 27 - Wednesday, June 29)

**Under the Sea Adventure Camp**

Becky Harrell

(Monday, July 11th - Wednesday, July 13th)

**Crafts with Kayla Camp**

Kayla Poulos

(Monday, July 18th - Wednesday, July 20th)

**Down on Corte's Farm Camp**

Pam Corte

(Monday, July 18th - Wednesday, July 20th)

**Painting with Shannon**

Shannon Noble

(May - July)

(More information can be found at [shannonnobleart.com](http://shannonnobleart.com))

